

LET'S GET
STARTED!

RISE'S MISSION

Rise unlocks potential and opens doors to success for people with disabilities or other challenges through creative solutions and customized support.

We envision a progressive, supportive, and collaborative environment that fosters meaningful growth and provides opportunities to live a life filled with purpose.

LET'S GET
TO WORK!



For find out more or to set up an informational meeting, please contact:

In the Twin Cities Metro area:

Dan Meyers

dmeyers@rise.org; 612-877-1217
2003 Central Avenue N.E.

Minneapolis, Minnesota 55418

In the Central Minnesota area:

Mike Harper

mharper@rise.org; 651-257-2281
13265 Sylvan Ave., PO Box 336
Lindstrom, Minnesota 55045



Administrative Offices
8406 Sunset Road N.E.
Spring Lake Park, Minnesota
55432
763-786-8334

rise.org
Facebook: Rise, Incorporated

An Equal Opportunity Employer



**PUSHING BOUNDARIES.
UNLOCKING POSSIBILITIES.**

YOU HAVE IDEAS AND GOALS.
RISE CAN HELP YOU
MAKE THEM A REALITY

PUTTING POSSIBILITIES
INTO ACTION

NO RISKS TO YOU -
BUT PLENTY OF BENEFITS!



*Would you like assistance
in finding a job?
Rise's experienced team
members can help!*

If you have not yet had a competitive job in the community but would like to, Rise's employment specialists are available to assist you in finding a community job.



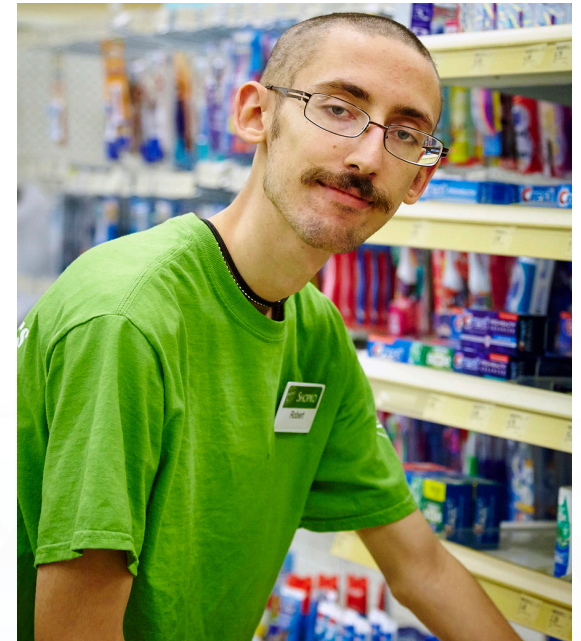
*Are you eligible for services?
You need to:*

- * Live in Hennepin, Anoka, Chisago, or Northern Washington County or the St. Croix River Education District (SCRED)
- * Qualify for a waiver or be on a waiver
- * Not have been competitively employed before

How can we assist you?

Depending on your specific needs, Rise will be happy to work with you to:

- * Develop a customized Vocational Profile which will help you plan your career
- * Identify opportunities for work experiences and job explorations before applying for suitable jobs
- * Work with you during the job application phase to help write your resume and cover letters, fill out job applications, practice job interviewing, and even accompany you on the job interview, if you wish
- * Determine what kinds of supports and/or accommodations you will need on the job



*Rise support continues
even after you've been hired*

Once you have been hired in a new job, Rise team members can assist you and your new employer in several ways to help ensure your success.

Perhaps you could benefit from job accommodations and on- and offsite supports. We can assist with that! Team members are also available to provide training for the employer on disability-related issues as needed.